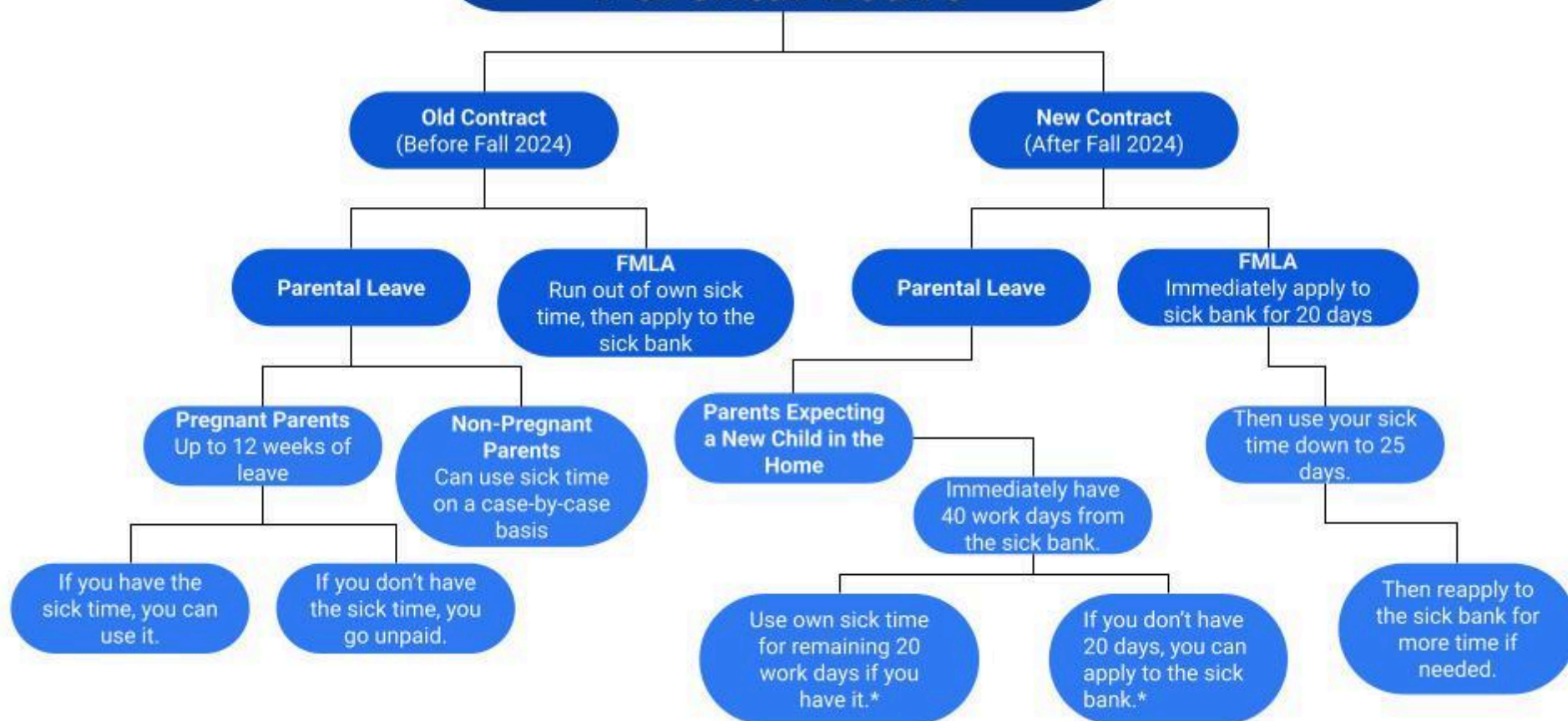


Sick Bank, FMLA, and Parental Leave



- The old contract counted parental leave in weeks. The new contract counts in work days.
- All types of parents are included in the new contract.

- The old contract staff entered the sick bank at 30 days (3 years in the district). The new contract staff enters sick bank at 5 (4 to 5 months).

*Teachers in their first year of employment in MPS only have access to the 40 work days. The remaining leave would be unpaid.

***Please remember to discuss your leave with both an MEA representative and human resources. We work together to ensure all staff can take the time off they have a contractual right to.

